



# QPL-XS

PRESSFIT PCB FOR ELECTRICAL  
POWER MANAGEMENT



HEADQUARTERS

**C.O.B.O. SpA**  
Via Tito Speri, 10 - 25024 Leno (Brescia) ITALY  
**Phone** +39 030 90451  
**Fax** +39 030 9045330



**info@cobogroup.net | www.cobogroup.net**

Le informazioni contenute nella presente informativa hanno scopo puramente indicativo.  
L'Azienda si riserva senza preavviso il diritto di apportare qualsiasi modifica tecnica del prodotto.  
The information published in this catalogue is purely indicative. The Company reserves the right to introduce  
all technological changes of the present product at any time and without prior notice.

The QPL-XS is an extension product of the "QPL" family used to increase the quantity of fuses and relays that can be managed inside the vehicle.

The new QPL-XS has been entirely developed with press-fit technology

VERSIONS

- 1. Fuses only
- 2. Fuses relays

In both versions there is an inspection cover for monitoring and replacement of fuses and relays

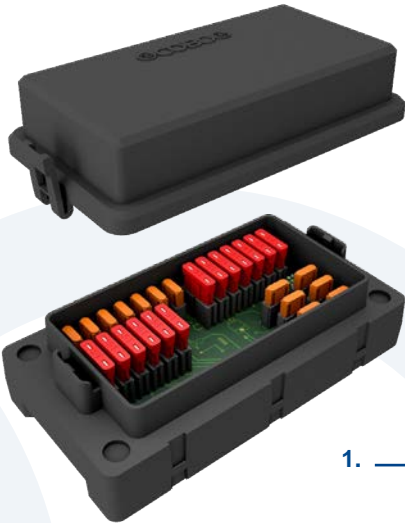
The product its the evolution of the current COBO fuses boxes and relays wired

MAIN ADVANTAGES

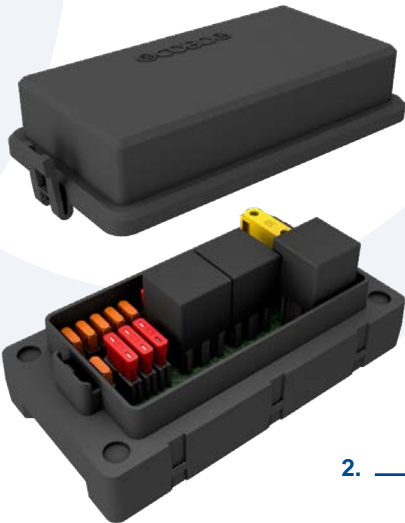
Quick and easy installation

Space saving and reduction to wiring harnesses

Easy connection



1. 26 Fuses only



2. 12 Fuses  
1 Maxi relay  
2 Mini relays

TECHNICAL SPECIFICATIONS

- Sealing degree: IP 42 with connectors properly plugged
- Power supply: 12V or 24V